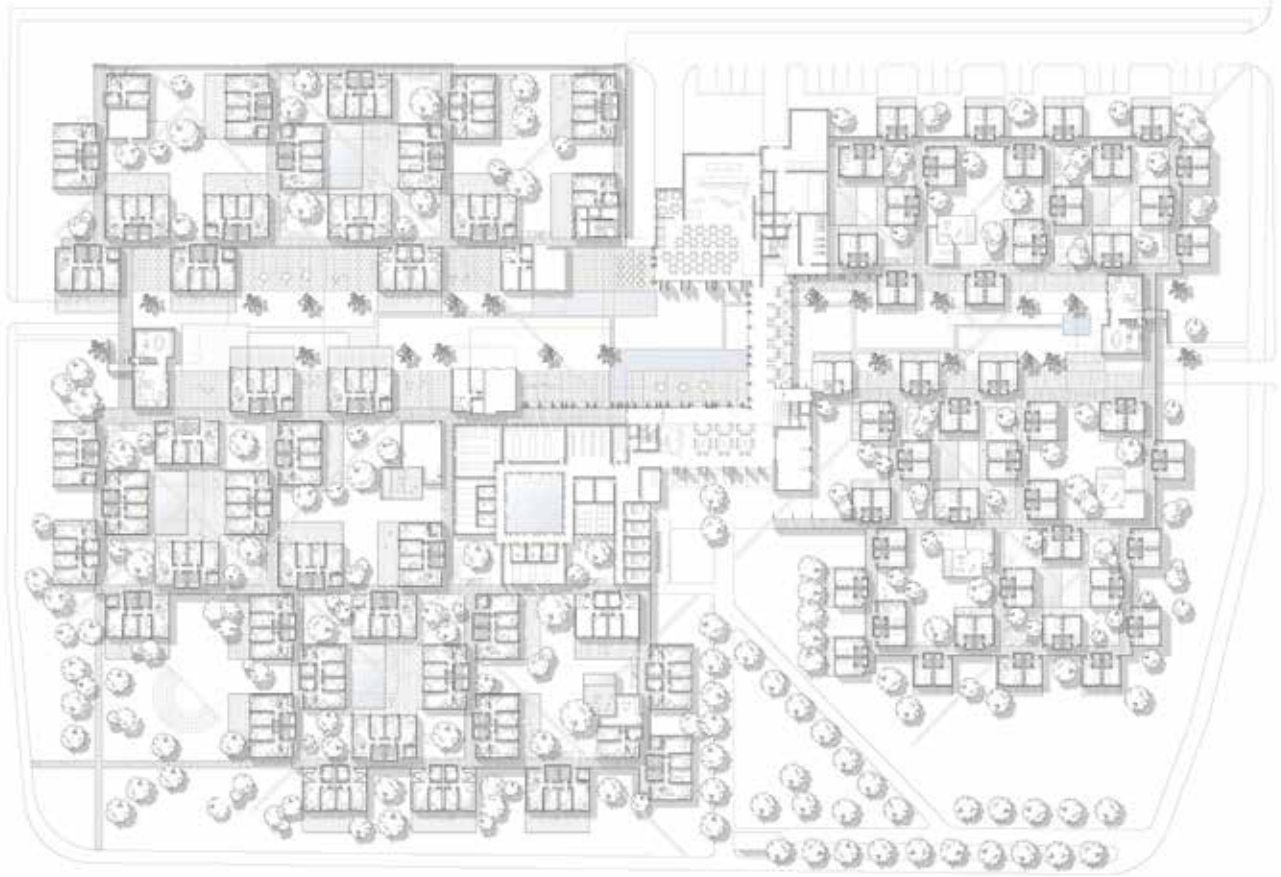


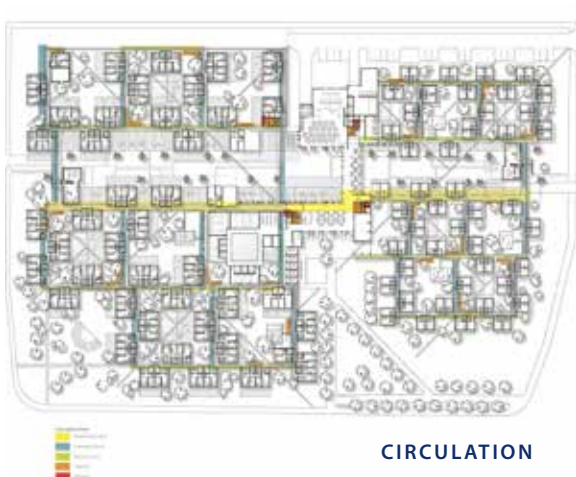
aXon Academic Campus Education City, Qatar

*Regionally specific "microvillas" form a web
of academic neighborhoods*





SPATIAL TYPES



CIRCULATION

Spread over 2,500 acres on the outskirts of Doha, Education City hosts branch campuses for a number of leading colleges and universities: Weill Cornell Medical College, Texas A&M University, Carnegie Mellon University, Virginia Commonwealth University, and Georgetown University as well as numerous other educational and research institutions. By forging partnerships with other world class institutions, Qatar Foundation aims to make Education City an international leader in progressive education and advanced research. To support its mission, Qatar Foundation is creating a vibrant living-learning environment.

Qatar Foundation commissioned JLA to develop a residential campus masterplan to house 1,200 students on campus, building on the existing overall campus structure. Two sites were located within the southern campus of Education City - one 41,000 sq.m. neighborhood of 600 male students and one 38,000 sq.m. neighborhood of 600 female students. A preliminary campus concept was developed in some detail for the women's housing complex, serving as a prototype for the future male campus.

Recognition

- 2008 Honor Award for Campus Planning, AIA/Boston Society of Architects
- Invited competition finalist presentation to Her Highness Sheikha Mozah Bint Nasser Al-Missned, Doha, Qatar, May 2007



Semi-detached paired unit 'pavilions' form the core aggregation of student apartments and residence hall rooms. With their three unattached walls the pavilion residences celebrate the individuality of each student with optimal privacy and multiple orientations for view and ventilation. Cooling is provided by overhead, energy efficient, and passive-operation convection valences.

To provide maximum construction schedule and quality flexibility, the pavilion concept is organized to enable off-site modular pre-fabrication construction delivery options. The dual wall and floor construction, which come at no cost from potential pre-cast modular options, will be leveraged to optimize the acoustic isolation of the residences.



Breezeway access to the semi-detached pavilions create a uniquely private environment for each student



Design Solution

The aXon live/learn campus plan accommodates a broad mix of cultures and experiences. The primarily undergraduate population includes citizens of Qatar, the Middle East, and other countries such as New Zealand, South Africa, Bosnia, and the United States. The campus configuration is meant to allow for a multiplicity of diverse relationships to be created while respecting the privacy and dignity of each individual – essential values within the local culture.

Interaction with the client was formal with an extensive and highly detailed brief laying out the primary goals: connectivity to the existing campus plan; sustainability; interaction of educational and residential components; and conformance with the needs for privacy and traditional customs. Feedback was provided through concentrated review sessions in Qatar with the Education City campus architect and staff. Additional sessions included student life coordinators, faculty, a student focus group and a final presentation to Her Highness Sheikha Mozah Bint Nasser Al-Missned.

Considering the influence of the climate and the need for enhancing informal academic interaction, the team utilized small scale planning and massing considerations to go beyond the normal focus on general program designations and exterior spatial hierarchies. The primary insight centered around the occupiability of small outdoor rooms that, when partially covered, could assist in the creation of micro-climates and reduce cooling loads on buildings. This was, in effect, a convergent solution to both the live/learn and ecological requirements that would affect the overall planning scale and pattern.

The women's complex is divided into two main parts, with student dormitories to the north and apartments to the south. The units are connected by a linear plaza, which provides reflecting pools, lawns, seating areas and informal gathering spaces. At the center of the women's housing complex are public spaces, containing a Marche dining hall, lounges and community learning centers, which are available to both men and women. Only women are permitted into the prayer and ablution space on the second floor and into the residential areas.

Master plan relating men's and women's campuses to education city open space and infrastructure



JLA Role
Lead Design Architect

Associate Architect/Engineer
Halcrow Architecture and Engineering

Personnel Jonathan Levi FAIA, Project Designer/Principal in-Charge; Gary Wang AIA, Project Architect

Client Qatar Foundation, Education City

Size 19.5 acres

Location Doha Qatar

Masterplan complete 2007