



May Residence

A home floating in the treetops



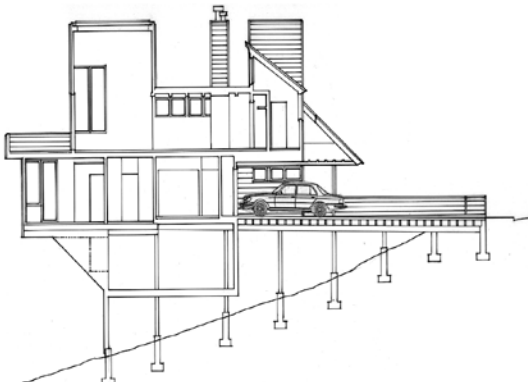


Recognition

- 2000 Award for Design Excellence in Housing, Honor Award, Boston Society of Architects/AIA
- Exhibition, Yale School of Architecture, Main Gallery, May 2001.

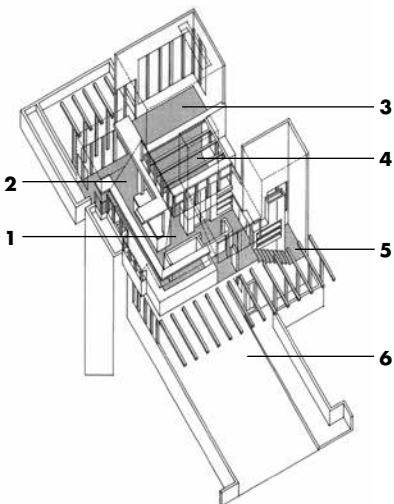
Publications

- *Houses-Casas-Häuser*, eds. Hugo Kliczkowski and Alejandro Bahamón, HK-Onlybook/Loft Publications, Spain, 2005, pp92-99.
- *The Distinctive Home: A Vision of Timeless Design*, Jeremiah Eck, The Taunton Press, 2003, pp156-157.
- "The Year in Review Issue", *ArchitectureBoston*, vol. 3, no.5, 2000, p 58.
- "A Modern Treehouse", R. Campbell, *Boston Globe*, Jul 8, 1999, ppF1,8.
- *Harvard Design Magazine*, Fall 1998, pp98.



Open kitchen

The kitchen space curls into a semi-concealed pantry providing both continuity with the workspace and separation from the living spaces. The living spaces branch out from the kitchen towards the view, maintaining a flexible triangle of communication between them.



Second Floor Plan

- 1 Kitchen pantry
- 2 Dining
- 3 Living
- 4 Den
- 5 Entry stair
- 6 Parking bridge



Program

The essential character of this home arose out of the challenges of a steeply sloped site. To take advantage of the views offered, the two story structure is raised with its lower floor flush to street grade. Living activities are located upstairs to heighten the drama of the views and light while the bedrooms are provided at grade.

Solution

By cantilevering the second floor towards the street, Jonathan Levi Architects create a welcoming shelter out of the car port. Here, the overhanging roof is treated with beamed elements which are integrated with the front porch trellis. The front of the house provides a domestic face to the street while incorporating the functional presence of the automobile. At the rear, the cantilevered roof deck stretches out to the views. Tall custom walk-through windows flood the interior with light.

JLA Role
Lead Design Architect

Personnel Jonathan Levi FAIA,
Project Designer/Partner-in-Charge

Photographer Anton Grassl

Location Brookline, MA

Size 2,000 sf

Completed September 1996

