

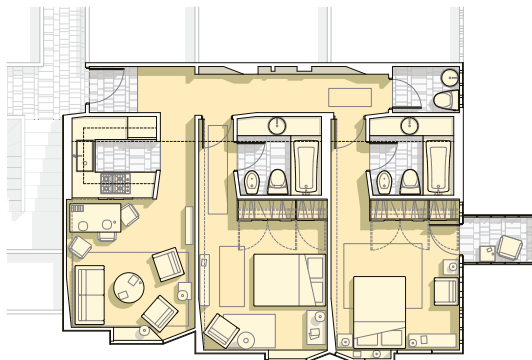
Medical Research Staff Township

Creating a complete urban vision to support healthcare innovation in the future

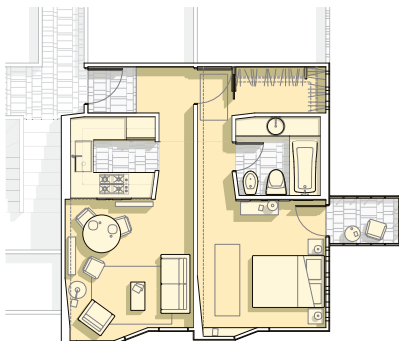


The bWell township plan is a project for 3,000 inhabitants covering all scales of design including master planning, urban design, building exterior and interior design and furnishings. It is based on a fundamental insight into the need of the client, Qatar Foundation lead by Her Highness, the Emira Sheikha Mozah Bint Nasser Al-Missned of Qatar, to attract and retain the best and the brightest international personnel for the Sidra Medical Research Center through the ability of its housing and public functions to engender authentic community.





TWO BEDROOM APARTMENT PLAN

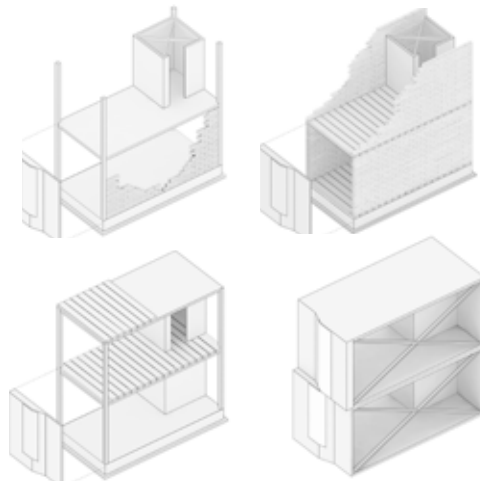


ONE BEDROOM APARTMENT PLAN

Nurse's Housing

The nurse's neighborhood is a dense matrix of shaded semi-public courtyards accessed by trellised pedestrian mews and clustered around the central nurse's community hall. Residences are typically organized into typically 3-story, 12 unit garden apartment mini-blocks. The courtyards and mews' together with their subspaces, fore-courts and alleys form a connected web of highly varied public spatial experiences and locales for dwelling addresses and for resident interactions. Pocket parks of varying sizes occur intermittently providing variation. Further variation for the mews streetscape is provided by modular infill units at selected fore-courts which creates an unpredictable street section rhythm.

Like all the bWell housing the Nurse's apartments are composed of fully modular bays. The interiors emphasize ample size and privacy for the bedrooms where much of the living will be done. Bedrooms are independent and well separated facilitating use by non-family co-inhabitants. The ensuite bathrooms are separated from the bedrooms by a freestanding partial height wall which enlarges the sense of space.



Construction procurement alternatives enabled by 100% modular planning



Village Center

The village center is located to take advantage of the corner which terminates the Ceremonial Drive and marks the approach to the site's main entrance. A raised landscaped public park is the setting for the community cafe and restaurant rendezvous. The Mosque assumes a prominent monumental position with its minaret focusing both exterior and interior site axes. It is entered from a walled courtyard on the axis towards Mecca.



Staff Housing

Privately subdivided shared courtyards



Design Solution

The bWell residential environment focuses on overcoming climatic conditions to deliver a fluid connection to the outdoors - breaking the confining barriers of enclosing walls which are the norm in this region. This was achieved by innovating a series of sustainability inspired micro-climate controlled outdoor environments such as regionally specific narrow courtyards, wind catchers, street trellises and transformable quasi-exterior spaces.

The overall master plan, with its three distinct neighborhood compounds serving different populations, is organized by a continuous swath of public landscape which serves for orientation and recreation and which connects to the larger Qatari urban fabric. Public buildings such as meeting halls, the village center and recreational facilities all front this 'landscape commons' bringing the neighborhoods together into one cohesive identity. The innovative bWell masterplan develops the inner neighborhood site space resource by dispersing the landscape in small scale increments which are closely mixed with low-rise unit aggregations.

JLA working together with its associated U.K. architect/engineer Halcrow Yolles, incorporated intrinsic passive sustainability as well as energy conserving active equipment. Roof insulation is augmented by extensively planted green roofs providing further insulation from heat gain at lower roofs visible from occupied areas. Upper roofs are covered in photovoltaic membrane.

Strategies for construction procurement in a difficult construction market include 100% modularly designed residential buildings. The modularity characterizes the floor plans as well as the standardized bathroom and kitchen packages. With this arrangement bWell housing could be executed using conventional concrete frame and infill construction, block and prefabricated plank construction, prefabricated panel construction or fully prefabricated and fitted-out manufactured pre-cast concrete or steel frame boxes.

JLA Role
Lead Design Architect

Associate Architect/Engineer
Halcrow Architecture and Engineering

Personnel Jonathan Levi FAIA, *Project Designer/Principal in-Charge*, Gary Wang AIA, *Project Manager*, Jeffrey Bourke, Jonathan Sargent, Kay Tanfield, Kevin Hirth, Matthew LaRue, Rebecca Hutchinson, Sunkyu Koh

Client Qatar Foundation, Education City

Size 2.5M gross floor area (sf)

Location Doha Qatar

Master Plan & Schematic Design Complete 2009

